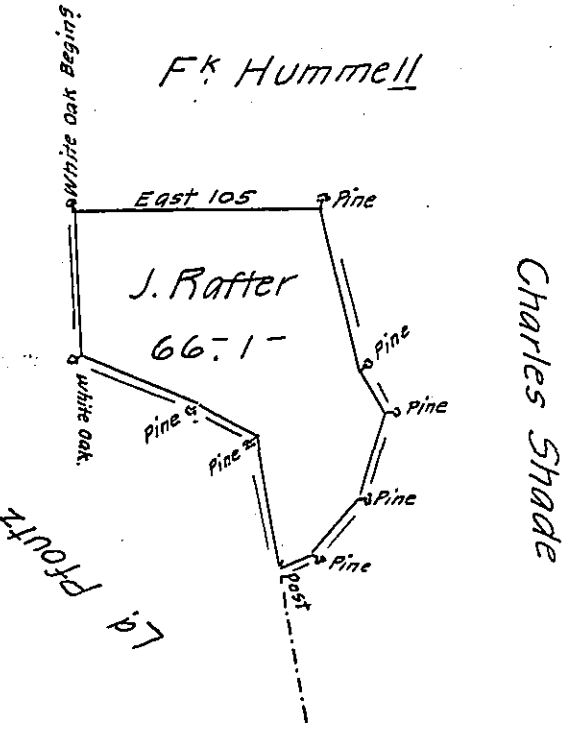


Courses & Distances

White Oak Beg^g
 East 105 to Pine
 by Frederick Hummel's Land Vac.
 S. 10. E. 72 Pine
 S. 32. E. 19 Pine
 S. 18. W. 36 Pine } By Charles Shade's
 S. 42. W. 30 Pine } Land
 S. 64. W. 13 Post
 N. 10. W. 56 1/2 Pine
 N. 62. W. 27 Pine } By Leonard
 N. 69. W. 55 White Oak } Pfoutz's Land
 North 61 1/2 to Beg^g by Vac.



The Draught of a Tract of Land called _____ situate in
 Greenwood Township, in the County of Cumberland; Containing Sixty Six
 Acres 23 Perches with the usual allowance of for Roads Survey'd the 11th
 day of November Anno Dom. 1769 for James Rafter in Pursuance of an Order
 of Survey bearing Date at Philad^a the 25th day of April Anno Dom 1769
 No. 5449.

p-Wm. Maclay

To John Lukens Esqr. }
 S. G. of Pennsylvania }

IN TESTIMONY that the above is a copy of the original remaining on file in
 the Department of Internal Affairs of Pennsylvania, made
 conformably to an Act of Assembly approved the 16th day of
 February 1833, I have hereunto set my hand and caused
 the Seal of said Department to be affixed at Harrisburg,
 this thirtieth day of April 1907

Leach Brown
 Secretary of Internal Affairs.